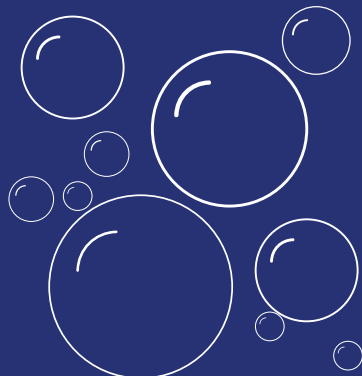


# SUTTNER

A M E R I C A C O M P A N Y

**PRESSURE WASHER COMPONENTS & ACCESSORIES**

Soft Wash  
Cleaning  
Catalog  
2023-2024





## ST-510 SOFT WASH SPRAY GUN *(low psi)*

ORDER #	PRESSURE	TEMP.	FLOW RATE	INLET	OUTLET	WEIGHT	BOX QTY
200510500	362 PSI	122° F	18 GPM	1/2" FPT	1/2" FPT	.3 lb	120

- Designed for low pressure and high flow applications
- **Chemical resistant**
- Ideal for use with soft wash systems
- Viton (synthetic rubber) seal
- Rear fluid entry
- Stainless steel ball and pin
- Reinforced fibre glass plastic body and seat

### ALSO AVAILABLE:

#### ST-510 with Lance

ORDER #	PRESSURE	TEMP.	FLOW RATE	INLET	OUTLET	WEIGHT
200510550	362 PSI	122° F	8 GPM	1/2" FPT	1/2" FPT	.75 lb

- **Chemical resistant**
- 24 inches long



**Additional Accessories Sold Separately**



## ST-1200B WASH DOWN GUN *(brass)*

ORDER #	PRESSURE	TEMP.	FLOW RATE	INLET	WEIGHT	BOX QTY
201200500	350 PSI	122° F	27 GPM	1/2" FPT	1.86 lb	20

- Durable spray gun with rubber sheathing protects against cold, heat and impact
- Adjusting screw retains desired spray pattern
- Fixing clamp holds back trigger allowing comfort and steady parts



## ST-1200S WASH DOWN GUN *(stainless steel)*

ORDER #	PRESSURE	TEMP.	FLOW RATE	INLET	WEIGHT	COLOR	BOX QTY
201200520	350 PSI	190° F	27 GPM	1/2" FPT	1.86 lb	Blue	10
201200521	350 PSI	190° F	27 GPM	1/2" FPT	1.86 lb	Green	10
201200522	350 PSI	190° F	27 GPM	1/2" FPT	1.86 lb	Yellow	10
201200523	350 PSI	190° F	27 GPM	1/2" FPT	1.86 lb	Red	10

- Comes with trigger guard
- Stainless steel housing
- Fixing clamp holds back trigger allowing comfort and steady spray
- Durable spray gun with rubber sheathing protects against cold, heat and impact
- High volume
- Adjusting screw retains desired spray pattern

## ST-29 MOLDED GRIP LANCES *(stainless steel)*

ORDER #	PRESSURE	TEMP.	LENGTH	INLET	OUTLET	WEIGHT	COLOR
200029315	6000 PSI	300° F	36 in.	1/4" MPT	1/4" MPT	1.10 lb.	Blue
200029316	6000 PSI	300° F	36 in.	1/4" MPT	1/4" MPT	1.10 lb.	Yellow
200029317	6000 PSI	300° F	36 in.	1/4" MPT	1/4" MPT	1.10 lb.	Green
200029318	6000 PSI	300° F	36 in.	1/4" MPT	1/4" MPT	1.10 lb.	Red

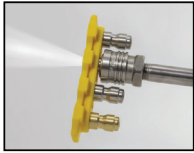
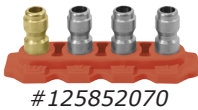
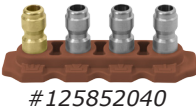
- Comfortable grip
- Ergonomic shape
- Heat-proof insulation
- **Chemical resistant**



## QUICK CONNECT NOZZLE SETS

ORDER #	PRESSURE	TEMP.	NOZZLE SIZE	COLOR
125852040	5800 PSI	300° F	4.0	Brown
125852045	5800 PSI	300° F	4.5	Green
125852050	5800 PSI	300° F	5.0	Black
125852070	5800 PSI	300° F	7.0	Orange

- Easily change from one nozzle to another
- Nozzle spray angles: 0°, 15°, 40° and soap nozzle
- Professional stainless steel nozzle inserts
- Different color for different nozzle sizes



# Universal Foam Injector Kit

## **UNIVERSAL FOAM INJECTOR KIT**

**Includes ST-75 Foam nozzle & ST-160 injector**

Adapts to any pressure washer

ORDER #	KIT	ORIFICE
999160751	1	2.0 - 3.5
999160752	2	4.0 - 5.5
999160753	3	6.5 - 7.0



Scan QR code to watch a short demo

<https://youtu.be/pl-eZl0aRtM>

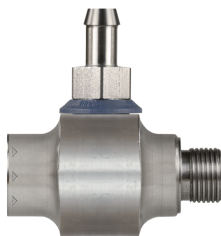
- Fits all orifice sizes
- **Optimum foam created 130°F or less**



### **ST-75 Foam Nozzle**

ST-75 produces thick foam for an easy and safe application and to save on chemical usage by reducing splash and drift of chemicals

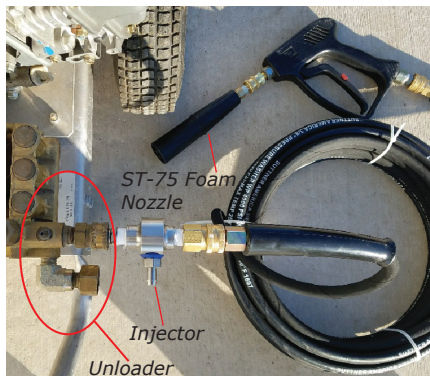
PRESSURE	INLET	WEIGHT
5000 PSI	1/4" F	.31 lb



### **ST-160 Stainless Steel Injector**

Durable stainless steel housing and single chemical

PRESSURE	INLET	OUTLET	WEIGHT
5000 PSI	3/8"	3/8"	.71 lb



Foam injector conveniently attaches after the pump/unloader on your pressure washer



## **ALSO AVAILABLE: with ST-76 Foam Nozzle**

For high volume applications over 6 GPM



ORDER #	KIT	ORIFICE
999160764	4	7.5 - 8.5
999160765	5	9.0 - 12.0

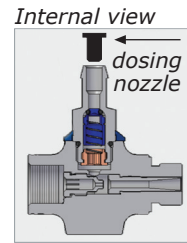
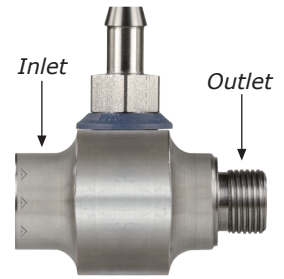
## ST-160 CHEMICAL INJECTOR *(single chemical)*

ORDER #	NOZZLE / ORIFICE
200160499	3.0
200160500	3.5
200160505	4.0
200160510	4.5
200160515	5.5
200160520	6.0
200160525	7.0
200160530	8.0
200160535	8.5
200160540	9.0
200160545	10.0
200160550	11.0
200160555	12.0
200160560	12.5
200160565	14.0
200160570	15.0
200160575	18.0

- Durable Stainless Steel housing
- 10 metering/dosing nozzles included
- Temperature: 194° F
- Inlet: 3/8" F
- Outlet: 3/8" M
- Pressure: 1000-5000 PSI
- Flow Rate: 1-18 GPM
- Weight .71 lb
- **Optimum foam created 130°F or less**

\* **Also available: Extreme chemical injectors for PH Level 2.0 or below**

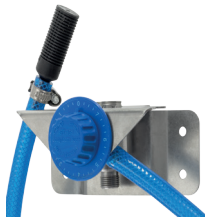
Available in all orifice sizes



### MOUNTING BRACKET:

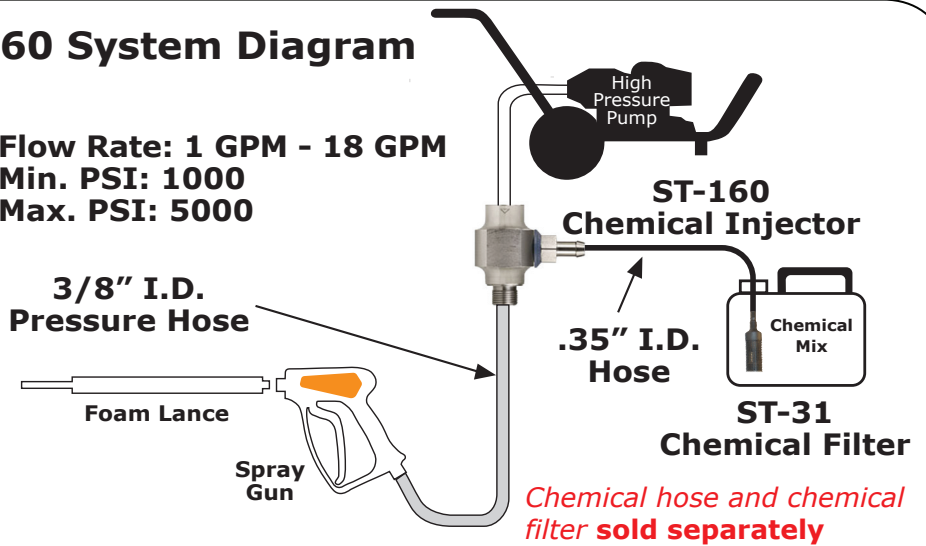


#200160160  
\*Sold Separately



## ST-160 System Diagram

Flow Rate: 1 GPM - 18 GPM  
Min. PSI: 1000  
Max. PSI: 5000



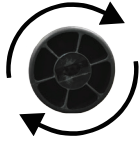
### Under 6 GPM Components



### Over 6 GPM Components



# Foam Nozzles



Easily change the spray pattern from vertical to horizontal

## ST-75 FOAM NOZZLE

*Produces thick foam for an easy and safe application and to save on chemical usage by reducing splash and drift of chemicals in conjunction with Suttner injectors*

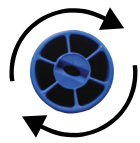
ORDER #	PRESSURE	TEMP.	INLET	ORIFICE	WEIGHT
200075548	5000 PSI	212° F	1/4" F	3.0	.31 lb
200075549	5000 PSI	212° F	1/4" F	4.0	.31 lb
200075552	5000 PSI	212° F	1/4" F	5.0	.31 lb
200075550	5000 PSI	212° F	1/4" F	5.5	.31 lb
200075551	5000 PSI	212° F	1/4" F	6.5	.31 lb
200075547	5000 PSI	212° F	1/4" F	7.5	.31 lb
200075554	5000 PSI	212° F	1/4" F	8.0	.31 lb
200075553	5000 PSI	212° F	1/4" F	10.0	.31 lb
200075555	5000 PSI	212° F	1/4" F	13.0	.31 lb
200075556	5000 PSI	212° F	1/4" F	15.0	.31 lb
200075557	5000 PSI	212° F	1/4" F	20.0	.31 lb

- Saves time and money
- **Heavy duty**
- Flow Rate: 1 - 6 GPM
- Foam injector required
- **Optimum foam created 130°F or less**



<https://www.youtube.com/shorts/EAAbMwdVx3Y>

**FOOD  
GRADE**



Easily change the spray pattern from vertical to horizontal

## ST-75S FOAM NOZZLE (stainless steel)

*ST- 75S produces thick foam for an easy and safe application and to save on chemical usage by reducing splash and drift of chemicals*

ORDER #	PRESSURE	TEMP.	INLET	ORIFICE	WEIGHT
200075574	5000 PSI	212° F	1/4" F	5.0	.31 lb
200075572	5000 PSI	212° F	1/4" F	8.0	.31 lb
200075573	5000 PSI	212° F	1/4" F	10.0	.31 lb
200075575	5000 PSI	212° F	1/4" F	13.0	.31 lb
200075576	5000 PSI	212° F	1/4" F	15.0	.31 lb
200075577	5000 PSI	212° F	1/4" F	20.0	.31 lb

- With stainless steel "wool" like foam pad
- Foam injector required

## ST-75.2 LONG RANGE FOAM NOZZLE

ORDER #	PRESSURE	TEMP.	FLOW RATE	INLET	ORIFICE	WEIGHT
200075800065	2175 PSI	100° F	up to 7 GPM	1/4" FPT	6.5	.75 lb
200075800070	2175 PSI	100° F	up to 7 GPM	1/4" FPT	7.0	.75 lb
200075800075	2175 PSI	100° F	up to 7 GPM	1/4" FPT	7.5	.75 lb
200075800080	2175 PSI	100° F	up to 7 GPM	1/4" FPT	8.0	.75 lb
200075800100	2175 PSI	100° F	up to 7 GPM	1/4" FPT	10.0	.75 lb
200075800130	2175 PSI	100° F	up to 7 GPM	1/4" FPT	13.0	.75 lb
200075800150	2175 PSI	100° F	up to 7 GPM	1/4" FPT	15.0	.75 lb
200075810130	2175 PSI	100° F	up to 12 GPM	1/4" FPT	13.0	.75 lb
200075810150	2175 PSI	100° F	up to 12 GPM	1/4" FPT	15.0	.75 lb
200075810200	2175 PSI	100° F	up to 12 GPM	1/4" FPT	20.0	.75 lb

- Adjustable airflow
- Throws foam 40 feet
- **Optimum foam created 130°F or less**



<https://www.youtube.com/watch?v=Twk8-gQP50s>



## ST-32 CHEMICAL STRAINER (stainless steel)

Soap enters through strainer preventing debris from entering the pump. A durable alternative to lightweight strainers.

ORDER #	HOSE BARB	MATERIAL	WEIGHT
200032600	5/16" or 3/8"	Stainless Steel	.06 lb

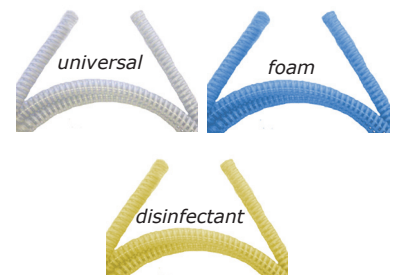
- Chemical resistant plastic screen outperforms stainless steel screens
- Straight through design
- 4 ft clear hose available, #900000041

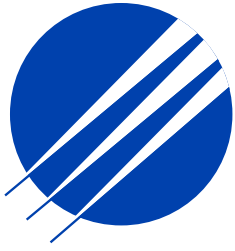


## NYLON HOSES (reinforced pvc)

ORDER #	TEMP.	I.D.	COLOR
080000004	140° F	.35"	Clear (universal)
080000310	140° F	.35"	Blue (foam)
080000320	140° F	.35"	Yellow (disinfectant)

- Reinforced with (5) layers of PVC
- Price per foot (available in any length)





# SUTTNER

A M E R I C A C O M P A N Y

*PRESSURE WASHER COMPONENTS & ACCESSORIES*

---

With almost **60** years of experience, Suttner America Company is one of the worldwide leading manufacturers of high quality products for the cleaning industry.

**Address:**

14864 West Ridge Ln.  
Dubuque, IA 52003

**Fax:**

(563) 556.3038  
(800) 821.0660

**Phone:**

(563) 556.3212  
(800) 831.0660

**Email:**

[sales@suttner.com](mailto:sales@suttner.com)

**Web:**

[www.suttner.com](http://www.suttner.com)

***GERMAN ENGINEERED TECHNOLOGY***